

Rock Fort

Tiruchi's most famed landmark is an 83m high rock which is the only out crop in the otherwise flat land of the City. The most amazing fact about the rock is that it is one of the oldest in the world - approximately 3,800 million years, which makes it as old as the rocks of green land and older than the Himalayas. The sheer aboutness of its rise is an attention grabber in itself, of which very little remains, but the temple at the summit of 344 steps news out of rock leading to the top where there are inscription dating back to the 3rd century B.C. Hardly anything remains of the remnants but the main gaurd gate is still intact. The fort played an important part during the carnatic laws and according to an inscription, mainly contributed to lay the foundations of the British empire in India. Atop the rock is the Uchipillaiyar koil, a temple dedicated to Lord Vinayaka from where one can enjoy a panoramic view of Tiruchi. At light of stops lead to the Mathrubutheswarar of Thaymanaswami temple, dedicated to Lord Shiva where the lingam is a projection of the rock itself. Below the Siva temple there are two pallava cave temples that have beautiful sculptures of the 6th century. At the foot of the Rock fort is a tank and a Pavilion which are used during the float festival of the temples.



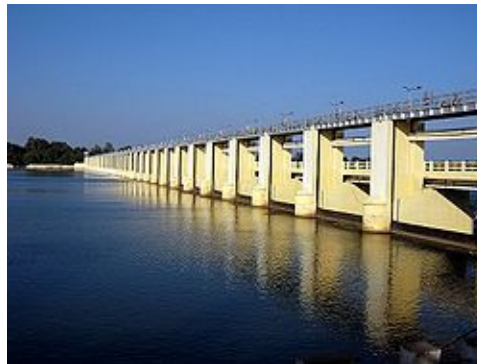
Sri Ranganathaswami Temple

Srirangam-The most important pilgrim centre is located in an island just 9 km from Tiruchi. Srirangam, surrounded by the waters of river Cauvery on one side and its tributary Kollidam on the other, is a 600-acre island town enclosed within the seven walls of the gigantic Sri Ranganathaswami temple. Sri Renganatha swami temple is one of the famous temples in India. There are 21 gopurams, the rajagopuram (principal tower) is largest. (72m high, 13-tiered towers) Originally, there was just a small shrine where the temple is today, but it was added on to expended by the Cholas, Cheras, Pandyas, Hoyasalas, the Vijayanagar Kings and Nayaks of Madurai and today Srirangam stands as the biggest temple complex in the country.



River Cauvery

Cauvery is a sacred river of southern India, (Ganges of the south) rising on Brahmagiri Hill in the Western Ghats in Coorg district of Karnataka state, flowing in a south-easterly direction for 765 km through Karnataka and Tamil Nadu states, and descending the Eastern Ghats in a series of great falls. Before emptying into the Bay of Bengal south of Cuddalore, Tamil Nadu, it breaks into a large number of distributaries describing a wide delta called the "garden of southern India." It is celebrated for its scenery and sanctity in Tamil literature, and its entire course is considered holy ground. The river is also important for its irrigation-canal projects.



Industry

Trichy is a major Engineering hub and Energy Equipment and Fabrication Capital of India .There are many major industrial houses in Trichy, few among them are

BHEL (Bharat Heavy Electricals Limited)-A Navaratna company, is the largest engineering and manufacturing enterprise in India in the Energy related / infrastructure sector today .BHEL was established more than forty years ago ushering in the indigenous heavy electrical equipment industry in India. The company cross the land mark of installing cumulative projects of more than 1,00,000 MW across the globe and it has become a 10000 MW power plant equipment manufacturing company. Amongst the wide network of BHEL's 14 manufacturing divisions, The Trichy complex which includes the High Pressure Boiler Plant and Seamless Steel Tube Plant at Trichy is the most important unit .BHEL supplied sets account for nearly 64% of the total installed capacity in the country, and have achieved the highest ever Plant Load Factor(PLF) of 80.5%

There are a lot of BHEL-groomed small to medium scale industries notable in the national and international market like, M/S.Athreya, M/S.Veesons, M/S.VKN, M/S.Premier etc. Trichy is known as the home of excellent NDE service providers across the country. The prominent amongst them are M/S.Super Quality Sevices, M/S.Supreme Excel NDT Services, M/S.Scaanray Metallurgical services, M/S.GBNDT Services etc.

Others major engineering industries include M/S.Cethar Vessels, M/S.GB Engineering and Ordnance Factory (HAPP and Small Arms Project), Golden Rock Locomotive Workshop and Dalmia Cements etc.

Educational Institutes

Considered an educational city, Tiruchirapalli has schools and colleges that are hundreds of years old. Notable educational institutes include

- St Joseph's College which was established in 1844 has produced a number of rare and remarkable geniuses, likes of India's former President, Bharat Ratna Dr A P J Abdul Kalam, Chief Election Commissioner of India Shri.N.Gopalaswami, Former Director IGCAR , Dr.Placid Rodrigues, ,
- National Institute of Technology, Trichy (formerly known as REC Trichy – Regional Engineering College), was founded in 1964. The institution offers Under Graduate Courses in ten branches and Post Graduate Courses in twenty one disciplines of Science, Engineering & Technology besides Ph.D. in all the departments. The prominent among them is M.Tech in NDT-the only full time PG.Course offered by any institutions in the country.

Other than that there are so many Engineering colleges of repute and the universities like Bharathidasan University, Anna University Trichy etc .

Tourist attraction near Tiruchi

Grand Anicut (Kallanai):	It is one of the greatest engineering march of India. This irrigation dam built across the River Kaveri by Karikala Cholan in the second century A.D. and later strengthened by the British. The dam is 329 m long and 20 m wide and still very much in use.
Mukkombu (Upper Anicut)(18 kms.)	This another dam called upper anicut or Mukkombu which is about 685 metre long constructed in the 19th century. The River Kollidam branches off from the River Kaveri here. This is another picnic spot with lush greenery and a park.
Vayaloor: (8 kms.)	The Lord Muruga Temple here is set amidst lush green vegetation .
Samayapuram: (20 kms.)	This is a very important place of pilgrimage famous for its temple dedicated to the goddess Mariamman.
Pulliancholai: (72 kms)	Pulliancholai is 72 km from Trichy which is on the foot high of kollimalai, a place of scenic beauty. This forest area is cool and green with the added attraction of the small water falls and a strength. Pulliancholai is a beautiful place for one day excursion.
Tiruvellarai: (25 kms)	Tiruvellarai is a place for vishnu Temple 25 kms away from Tiruchirappalli town. The Tiruvellarai Temple is famous for its Architecture and Swastika shaped water tank.
Gunaseelam: (24 kms)	Gunaseelam is situated 24 km away from Tiruchirappalli on the north bank of Kaveri River. There is a Vaiashnavite Temple and the name of the God is Lord Prasanna Venkateshwarar. It is a place for worship, festivals and also for mental relief or alleviation.
Pachamalai: (80 kms)	Pachamalai is spreading green hill range. It is a picnic spot to enjoy nature. It is famous for its Architecture and Swastika shaped water tank.
Planetorium :	Anna science centre/Planetorium is located on pudhukottai Road, Near Airport, Programmes in Tamil and English version are shown daily Ph.0431-2422190

	Timings: TAMIL: 10.30 a.m., 1.00 p.m., 3.30 p.m. ENGLISH: 11.45 a.m., 2.15 p.m., 4.45 p.m.
Government Museum:	This is located in Rani Mangammal Mandram, Trichy-2. Bronze and stone sculptures are on display here. Admission is free; the museum is open on all days except Fridays. Time 10.00 a.m to 5.00 p.m.

APPROXIMATE DISTANCE BY ROAD from TIRUCHIRAPALLI TO

PLACE	DISTANCE (IN KMS.)	PLACE	DISTANCE (IN KMS.)
CHENNAI	325	PICHAVARAM - Mangrove forest	214
BANGALORE	345	POINT CALIMERE - bird - Animal santurary	189
CHIDAMBARAM (natraj temple)	194	POOMPUHAR -ancient port of cholos	146
COIMBATORE - Manchester of India	204	PONDICHERRY (French colony)	198
COONOOR near Ooty	289	RAMESWARAM - famous island	313
KUTRALLAM falls	306	THANJAVUR - famous Big temple	056
HOGENAKAL Falls	253	THEKKADY - hill station in Kerala	213
KANCHIPURAM - silk sarees	270	TIRUPATHY - Balaji Temple	480
KANNIYAKUMARI - southern tip of India	384	THIRUVANNAMALAI - southern Kailash - Shiva Temple	250
KODAIKANAL -hill resort	160	VEDANTHANGAL - Bird Sanctuary	232
MADURAI (Meenakshi temple)	142	VELLORE famous Golden temple	298
MAMALLAPURAM near chennai	291	YERCAUD - Hill resort	172
MUDUMALAI Forest	359		
MYSORE	317		
OOTY - hill resort	302		
PALANI - Murugan temple	135		